



**SCAN HERE TO DONATE**



Donate or make a pledge today. Pledges can be spread over as many as three years. Donations are accepted via cash, check, online transfer, gifts of stock and securities, or through donor advised funds.

## THE TIME IS NOW

Currently, the lack of available field space puts Westminster at a disadvantage to its peer schools athletically and in terms of attracting new families. We seek the support of all who value Westminster School and want to fulfill this important project.

## TIMELINE

- Purchase & Prepare Land ● Completed
- Re-engage Engineer & Architect ● 2022
- Revise Site Plan & Submit to County ● 2023
- Permit Granted ● August 2024
- Relaunch Capital Campaign ● November 2024
- Break Ground ● Spring 2025
- Playground Opens ● Fall 2025
- Field Opens ● Winter 2025

## CONTACT

Phone: (703) 256-3620

Email: [LCowles@WestminsterSchool.com](mailto:LCowles@WestminsterSchool.com)

## WEBSITE

[www.WestminsterSchool.com/GriffinField](http://www.WestminsterSchool.com/GriffinField)

# GRIFFIN FIELD OF DREAMS



## IT TAKES A TEAM!



# STATE-OF-THE-ART SYNTHETIC TURF FIELD

## GRIFFIN FIELD OF DREAMS

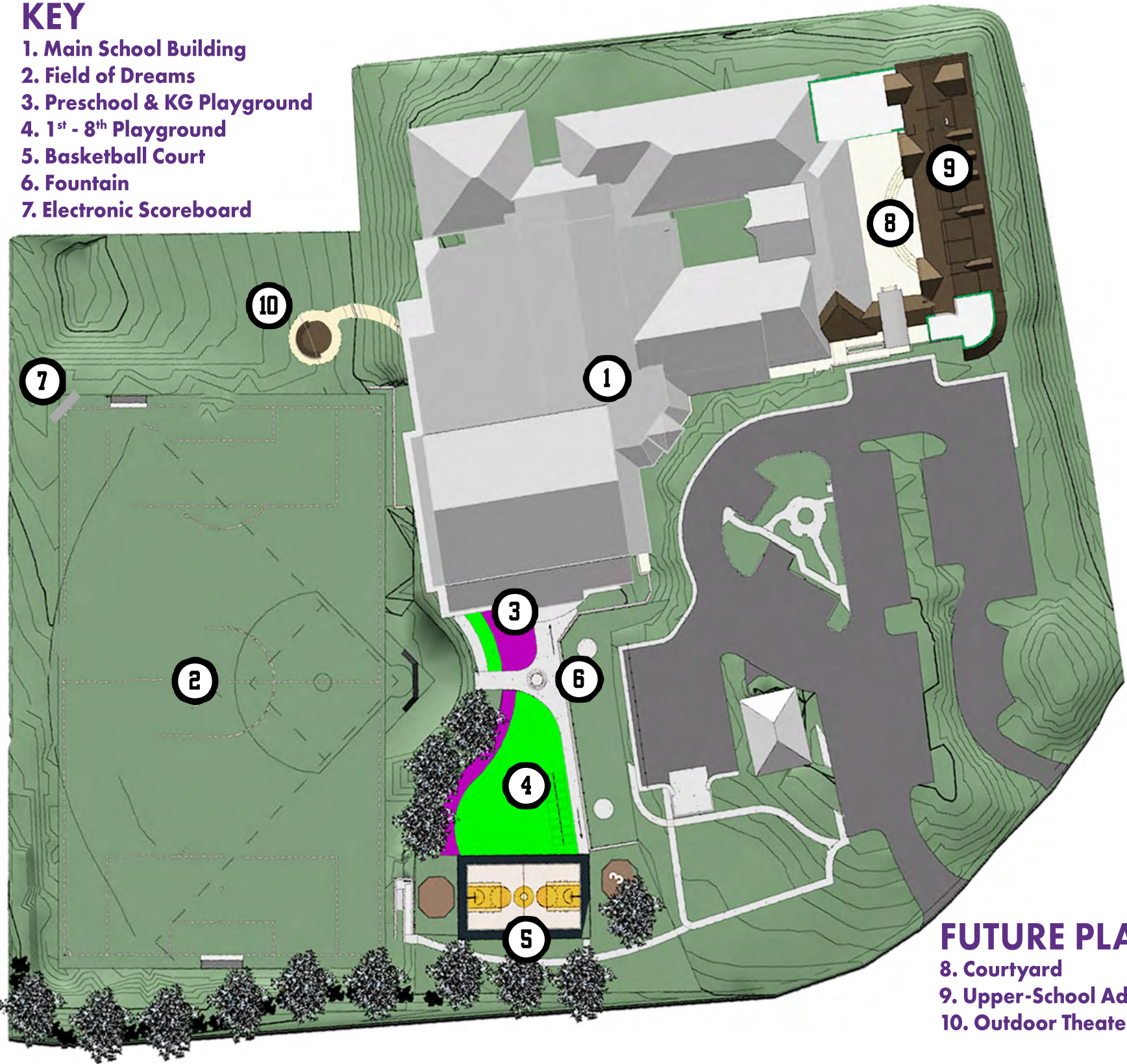
Installing a state-of-the-art athletic field will allow us to...

- Expand our athletic program to host games at home
- Strengthen current sports, such as soccer, track and field, and softball
- Generate additional revenue through sports-related after-school enrichment and camp offerings
- Attract more families



### KEY

1. Main School Building
2. Field of Dreams
3. Preschool & KG Playground
4. 1<sup>st</sup> - 8<sup>th</sup> Playground
5. Basketball Court
6. Fountain
7. Electronic Scoreboard



### FUTURE PLANS

8. Courtyard
9. Upper-School Addition
10. Outdoor Theater